

# Alfarapid System





## AR1710 Giunto ALFARAPID

Clamp Joint  
Collier  
Collarín

Misura/Size	Materiale/Material	Scatola/Box	Euro Price
ø 1"½	PACV	65	8,70
ø 2"		50	10,20
ø 2"½		40	12,50
ø 3"		25	14,40
ø 4"		18	18,00
ø 5"		-	23,00

## RACCORDI - FITTINGS



## AR131 Manicotto

Coupling  
Manchon  
Manguito

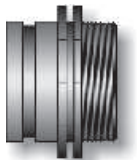
Misura/Size	Materiale/Material	Scatola/Box	Euro Price
ø 1"½	PP	-	1,35
ø 2"		180	1,50
ø 2"½		100	1,95
ø 3"		80	3,40
ø 4"		45	6,50



## AR132 Manicotto Ridotto

Reducing coupling  
Manchon réduit  
Manguito reducido

Misura/Size	Materiale/Material	Scatola/Box	Euro Price
ø 2"x1"½	PP	-	2,15
ø 2"½x2"		120	2,50
ø 3"x 2"		130	3,50
ø 3"x2"½		70	3,50
ø 4"x 2"		80	6,50
ø 4"x2"½		80	6,50
ø 4"x 3"		78	6,50

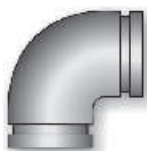


## AR151 Raccordo Filettato Maschio

Male adaptor\*  
Raccord male  
Unión macho

Misura/Size	Materiale/Material	Scatola/Box	Euro Price
ø 2"x1"½	PP	-	1,55
ø 2"x 2"		150	1,75
ø 2"½x2"		120	2,05
ø 2"½x 2"½		100	2,05
ø 3"x 2"		120	2,35
ø 3"x 2"½		84	2,35
ø 3"x 3"		72	2,35
ø 4"x 3"		48	7,10
ø 4"x 4"		30	7,10

\*Filettature NPT disponibili su richiesta  
NPT Threads available on request



## AR165 Gomito a 90°

90° elbow  
90° Coude  
Codo 90°

Misura/Size	Materiale/Material	Scatola/Box	Euro Price
ø 1"½	PP	130	3,00
ø 2"		100	3,50
ø 2"½		50	6,30
ø 3"		30	9,05
ø 4"		18	14,65



## AR166

### Gomito 90° filettato maschio

90° male threaded elbow  
Coude à 90 fileté  
Codo 90° rosca macho

Misura/Size	Materiale/Material	Scatola/Box	Euro Price
ø 2"	PP		3,70



## AR16FL

### Gomito 90° flangiato

90° flanged elbow  
Coude coude avec brides  
Codo 90° con brida

Misura/Size	Materiale/Material	Scatola/Box	Euro Price
ø 2"	PP		5,00



## AR141

### Tee

Tee  
Té  
Te

Misura/Size	Materiale/Material	Scatola/Box	Euro Price
ø 1"½	PP	80	4,10
ø 2"		50	4,75
ø 2"½		35	8,75
ø 3"		24	10,45
ø 4"		12	18,50



## AR106

### Tappo

Cap  
Bouchon  
Tapón

Misura/Size	Materiale/Material	Scatola/Box	Euro Price
ø 1"½	PP	-	1,35
ø 2"		150	1,50
ø 2"½		100	1,95
ø 3"		120	3,40
ø 4"		80	6,50



## AR213/313

### Adattatore per polifusione

Socket Welding adaptor  
Adpteur à souder  
Unión polifusión

Misura/Size	Scatola/Box	Euro Price	
		PP-R AR213	PE100 AR313
ø 2" x 50	-	1,93	1,93
ø 2" x 63	-	1,93	1,93
ø 2" x 75	-	1,93	1,93
ø 2"½ x 63	-	2,30	2,30
ø 2"½ x 75	-	2,30	2,30
ø 3" x 75	-	2,60	2,60
ø 3" x 90	-	2,60	2,60
ø 3" x 110	-	3,00	3,00
ø 4" x 90	-	7,81	7,81
ø 4" x 110	-	7,81	7,81

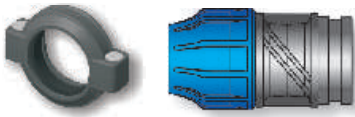


## AR413

### Adattatore per PVC

PVC adaptor  
Adpteur PVC  
Unión PVC

Misura/Size	Materiale/Material	Scatola/Box	Euro Price
ø 50 x 2"	PVC		3,00
ø 63 x 2"			3,50
ø 75 x 2"			6,30



**55940**  
**Raccordo Alfarapid**  
 Alfarapid adaptor  
 Raccord Alfarapid  
 Conector Alfarapid

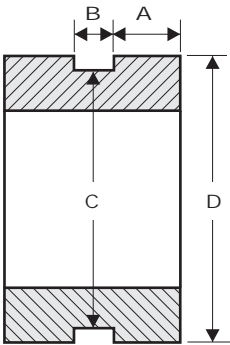
Misura/Size	Busta/Bag	Scatola/Box	Euro Price
ø 50 x 2"	5	50	16,73
ø 63 x 2"	-	40	19,30
ø 75 x 3"	-	24	32,36
ø 90 x 3"	-	-	40,20
ø 90 x 4"	-	12	43,94
ø 110 x 4"	-	7	65,27
ø 125 x 4"	-	-	119,37
ø 125 x 5"	-	-	124,57



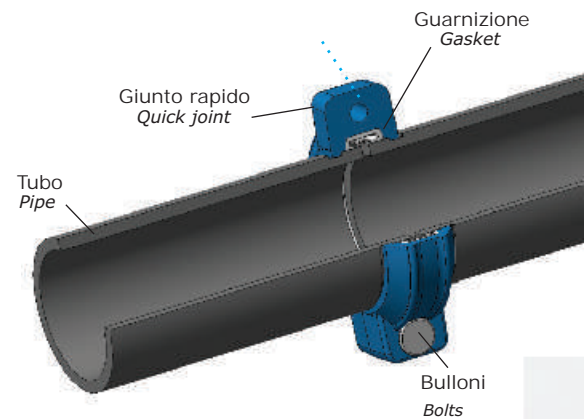
**55950**  
**Gomito Alfarapid**  
 Alfarapid elbow  
 Coude Alfarapid  
 Codo Alfarapid

Misura/Size	Busta/Bag	Scatola/Box	Euro Price
ø 50 x 2"	5	50	19,75
ø 63 x 2"	-	40	23,50
ø 75 x 2"	-	24	34,65

## CARATTERISTICHE TECNICHE - TECHNICAL FEATURES



	A	B	C	D
1 1/2"	15.9 ±0.76	7.14 ±0.76	45.1 <sup>+0</sup> / <sub>-0.38</sub>	48.3 ±0.48
2"	15.9 ±0.76	7.9 ±0.76	57.1 <sup>+0</sup> / <sub>-0.38</sub>	60.3 ±0.61
2 1/2"	15.9 ±0.76	8.7 ±0.76	72.3 <sup>+0</sup> / <sub>-0.46</sub>	76.1 <sup>+0.74</sup> / <sub>-0.74</sub>
3"	15.9 ±0.76	8.7 ±0.76	84.9 <sup>+0</sup> / <sub>-0.46</sub>	88.9 <sup>+0.89</sup> / <sub>-0.79</sub>
4"	15.9 ±0.76	9.5 ±0.76	110.1 <sup>+0</sup> / <sub>-0.51</sub>	114.3 <sup>+1.14</sup> / <sub>-0.79</sub>



	Giunto/Joint	Raccordi/Fittings	Guarnizione/Gasket	Bulloni/Bolt	Norme/Standards	Pressione max prova/max test pressure
Materiale Material	PACV	PP	EPDM (Standard) VITON (Optional)	Acciaio Zinco/Cromato Steel Zinc plated Acciaio Inox A2 (AISI 304) A2 Stainless Steel (AISI 304) (optional)	ISO 14236:2000 UNI EN 10226-1: 2006	Giunto/Joint 40 bar  Raccordi/Fittings 30 bar